

***SECTION 7
COMPONENT
ASSEMBLY
AND DISASSEMBLY***

REV.00

7.1 Top cover



Remove the coffee container cover, loosen the indicated screws and pull off the steam knob.



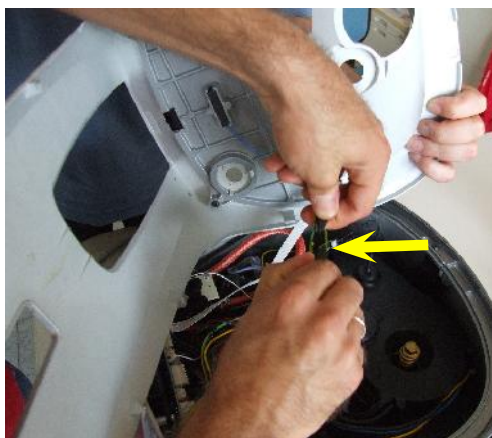
Pull out coffee container cover sensor.



To remove the dispensing head cover, follow the steps in a clockwise direction, remove the SBS knob, loosen the middle screw, take off the knob support, and loosen the indicated screws.

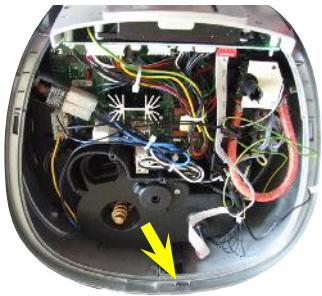


Raise the cover from the back and then pull on the front part as shown in the photo.



Unfasten the PTC connection from the cup warmer.

7.2 Right and left side casing



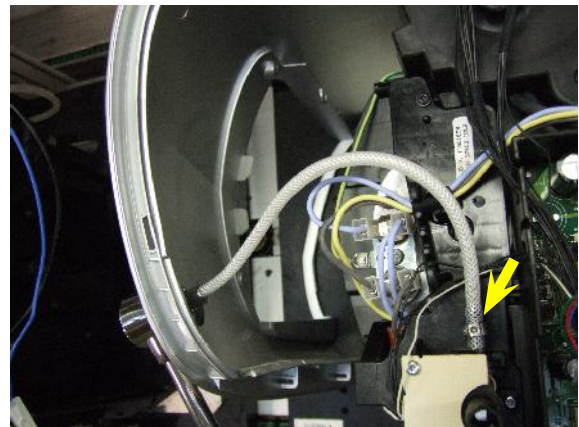
Loosen the screw as shown.



To remove the right side, loosen the screws as indicated.



To remove the left side, loosen the screws as indicated.



To take the left-side off, release the small clamp and pull out the wire mesh pipe connecting the steam pipe to the valve, removing the metal band as shown.



1



2

Split the two sides of the casing (see Fig..1).
 Press from the bottom (see Fig.2).
 Release and take it off from the side and at the bottom (see Fig. 3), pulling towards you at the same time (see Fig. 4).



3



4

7.3 Electronics

CPU card

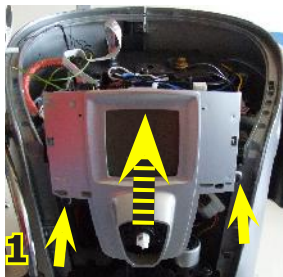
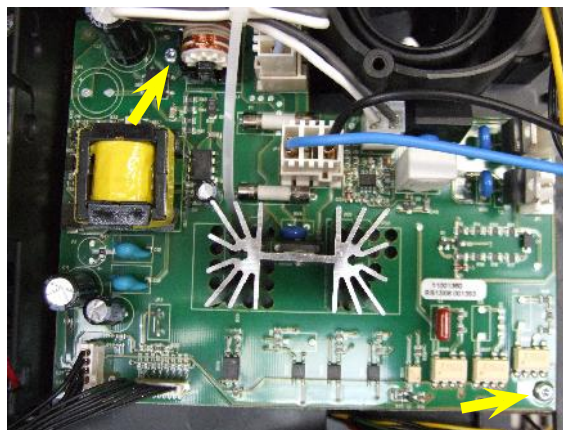


Fig.1 Loosen the screws as indicated and turn the front piece upwards to get to the card.

Fig.2 Take off the small clamp.

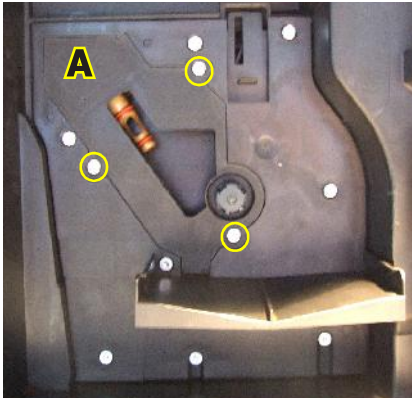
Fig.3 Disconnect all connectors and loosen the screws as indicated.

Power board

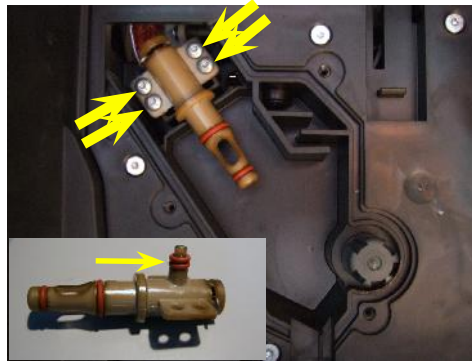


Remove the small clamps, disconnect all connectors and loosen the screws indicated.

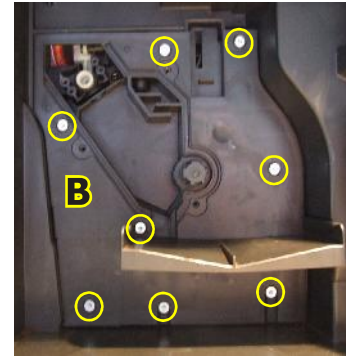
7.4 Gearmotor



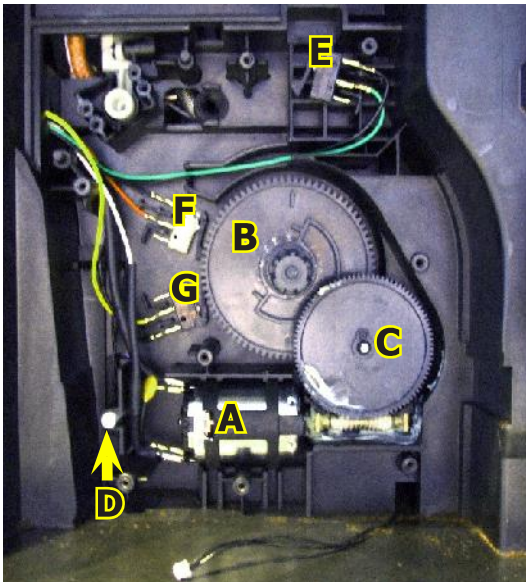
Remove the safety guard (A) by loosening the screws as indicated.



Loosen the four screws indicated and remove the heater valve asm. When refitting it, be careful with the two oil-rings shown in the smaller picture.



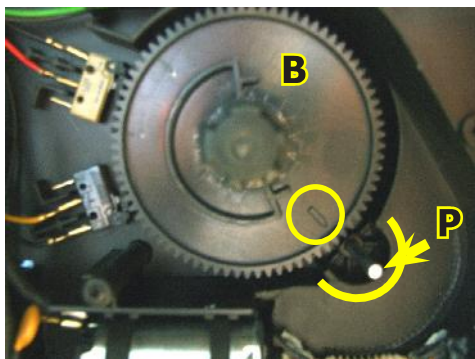
Disassemble the protection plate (B) by loosening the screws as indicated.



The following are located inside the compartment protected by the guard:

- Electric motor (A) with gears (B) and (C) for transmission and timing of the brew group.
- The drip tray present reed switch sensor (D).
- Brew group present microswitch (E).
- Microswitch (F) brew group at Home position.
- Microswitch (G) brew group at dispensing position.

Withdraw the gear (C) that meshes with the motor transmission shaft.
Withdraw the large gear (B).
Pull out the motor (A) complete with transmission shaft (H).



Insert the gear (B), taking care that the arrow stamped on the element is within the opening that contains pin (P).

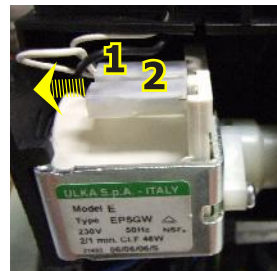


Install the motor and transmission shaft, inserting the guides (L) in the relative seat.

7.5 Pump



Take the pump out from the rubber support guides.



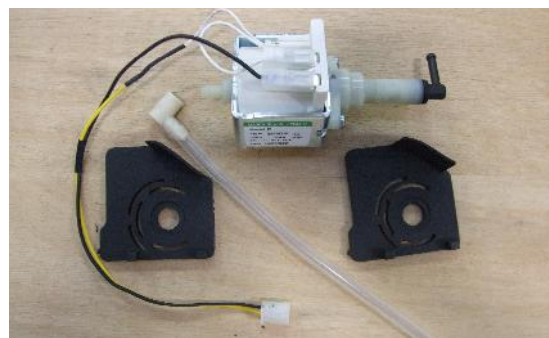
Withdraw the fastener connectors as indicated.



Pull out the adapter.



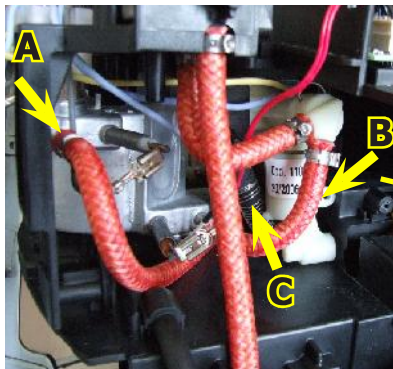
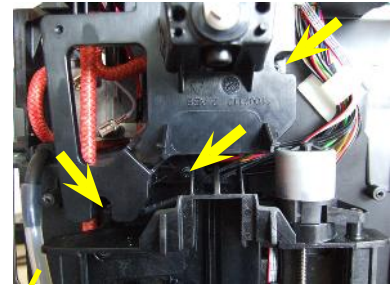
Take off the oetiker clamp as indicated and pull out the reinforced flexible hose.



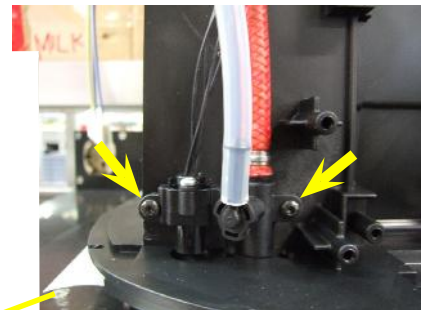
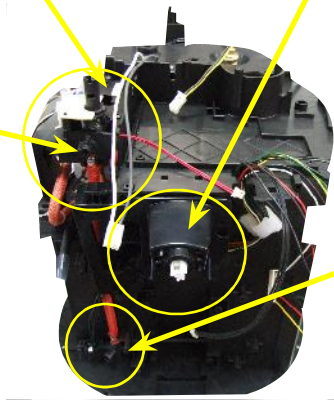
7.6 Heater and solenoid pilot unit



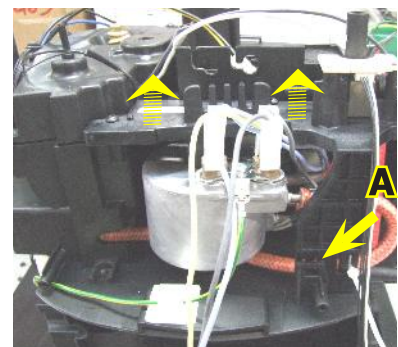
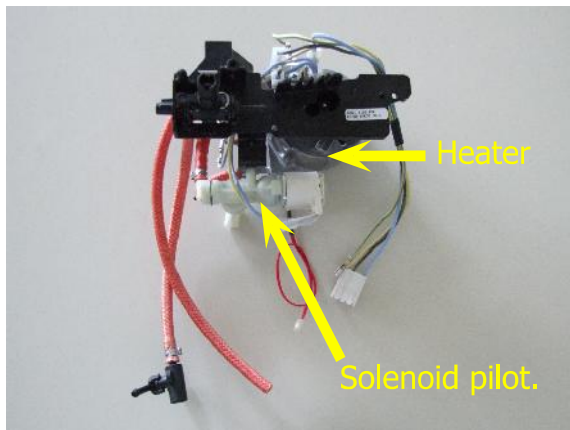
Loosen the screws as indicated.



Take off the oetiker clamp A, pull out the reinforced flexible hose, loosen screw B and withdraw the drain pipe C from the solenoid pilot.



Loosen the screws on the relief valve assembly.



Unhook the teeth anchoring to the body and lift the heater and solenoid pilot.

7.7 OETIKER clamp assembly and disassembly

Heater clamps

1 HEATER

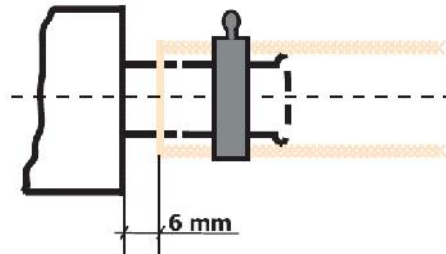


Figure (1) shows the assembly position of the clamp on the heater connector.

Solenoid pilot

2 SOLENOID PILOT

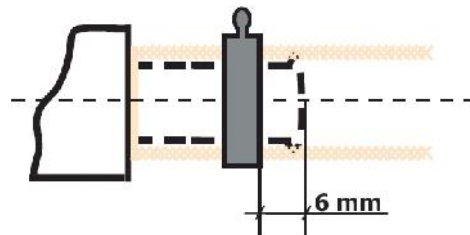


Figure (2) shows the assembly position of the clamp on the plastic solenoid pilot connectors.

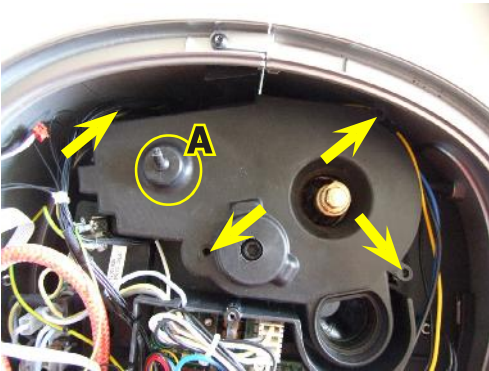


Use suitable pliers to tighten the clamp. Ensure correct tightening (A) and positioning as shown in illustrations (1) / (2).

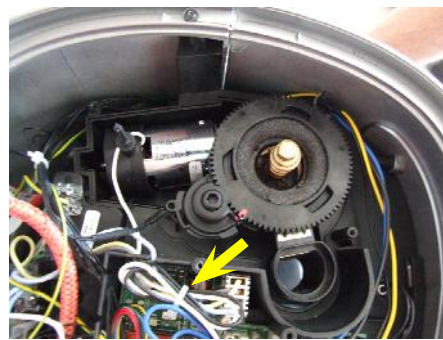


To remove the clamp, use a pincer as shown in (B)

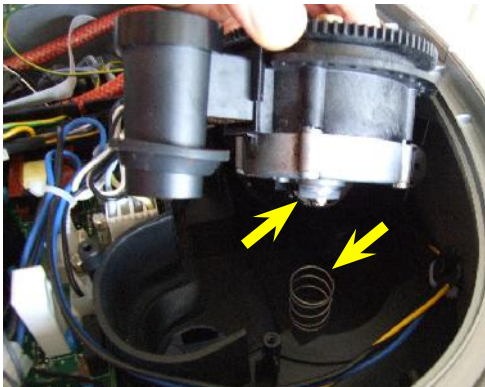
7.8 Coffee grinder



Loosen the screws on the cover and lift it off, being careful to withdraw damper A.

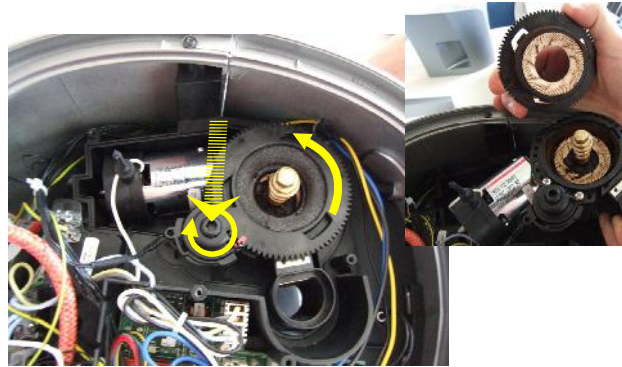


Unclamp and remove the connector inserted in the card.



When refitting the motor assembly, be careful to reinsert the spring.

7.9 Coffee grinder setting, assembly and disassembly



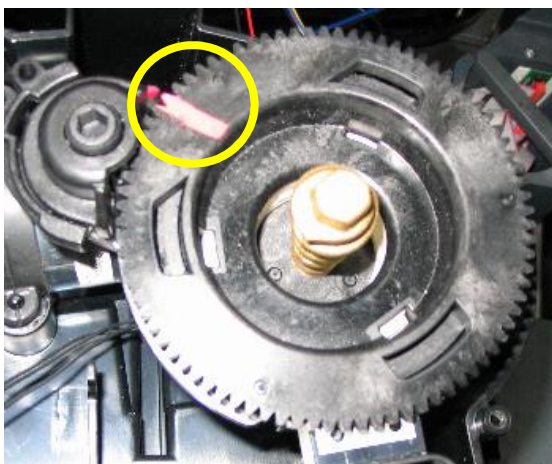
To remove the upper grinder support, use a wrench, turning it clockwise to release the grinder support from the bayonet coupling.



To remove the upper burr, rotate anti-clockwise until it detaches from the bayonet coupling.



On the lower burr, keep the increment pin as indicated locked in position and proceed as shown in the figure above.



When refitting the upper grinder support, take care to reposition the mark as shown in the picture.

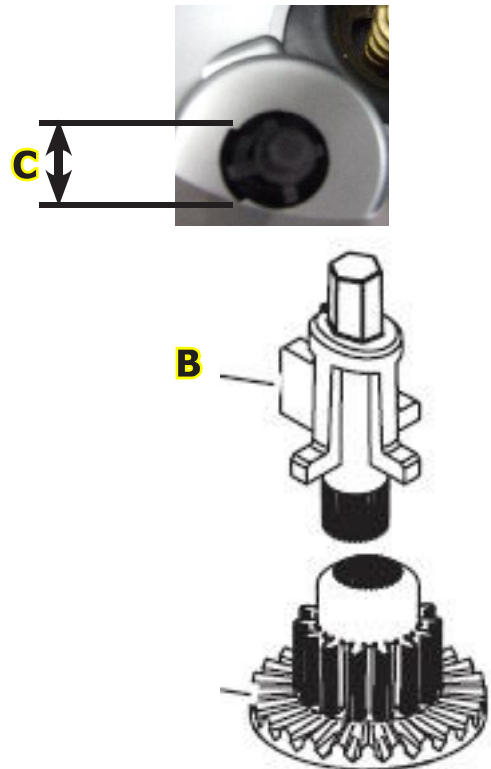
7.10 Grinder adjustment during servicing

To adjust the coffee grinder (in addition to user-permitted adjustments of "C" with the grinding adjustment tool "A"), remove the coffee granule container and turn adjustment insert "B" to widen or tighten grinding. This insert can be repositioned to move interval "C".

Be very careful not to separate the grinders from their supports.



Loosen the screw on the coffee container.



To vary the grinding setting, tighten or loosen with wrench "A" supplied.

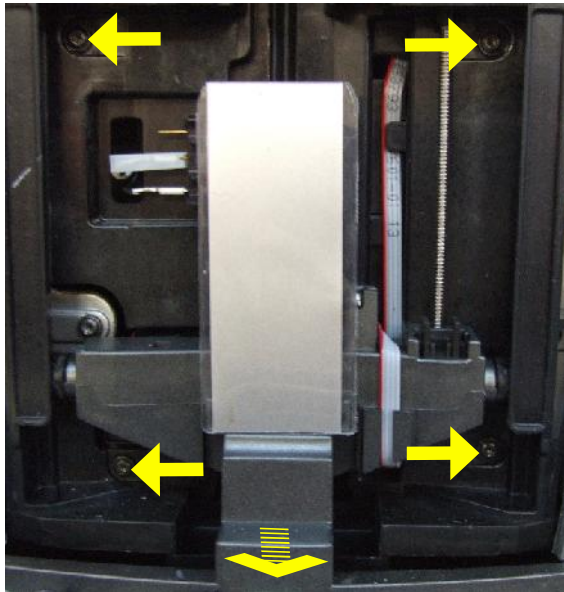
- (+) = Coarse grinding
- (-) = Fine grinding.



WARNING:

- Grinding must be adjusted with the motor in movement.
- Adjust the grinding level by one step at a time.
- After setting grinding, run two grinding cycles and check the resulting granules and dose.
- Repeat if further adjustment is required.

7.11 Motorized drip tray

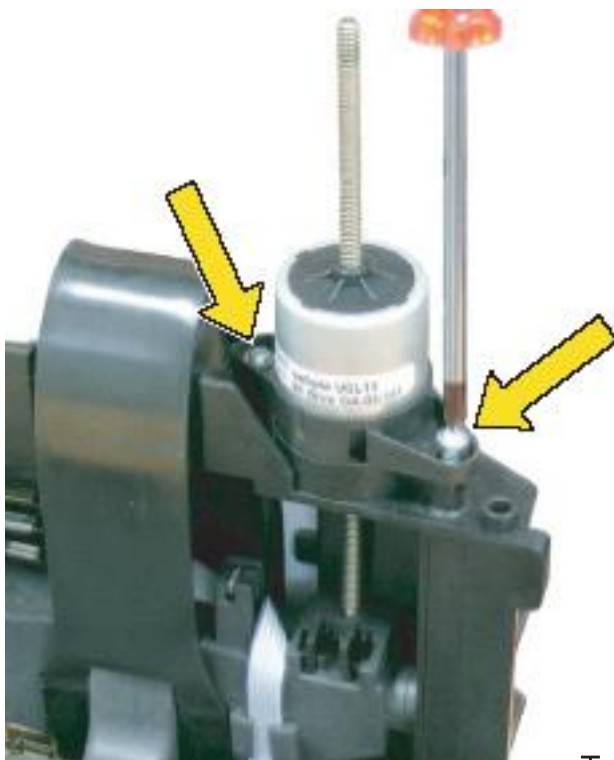


Loosen the screws as indicated.
Pull the motorized tray towards you.

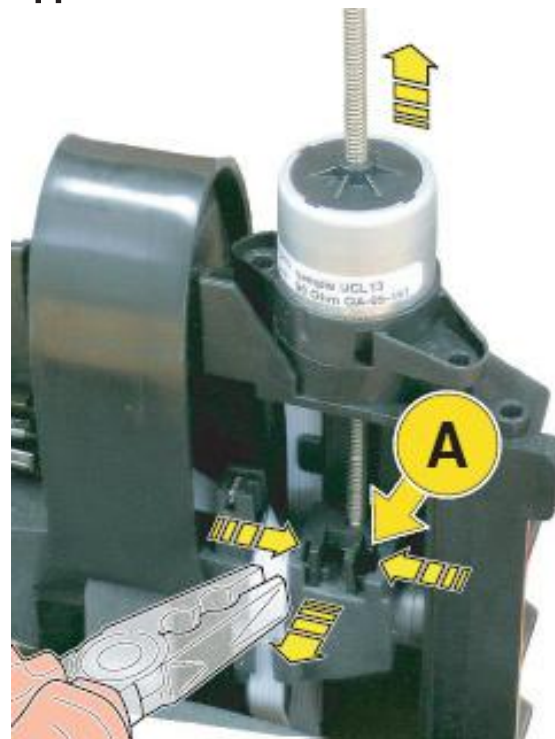


To reach the capacitive sensors, loosen the two screws to remove the safety guard under the drip tray.
Remove electrical connections (G) as indicated.

Disassembling the motorized tank stepper motor



Loosen the two screws to release the electric motor with worm gear



To withdraw the stop (A) use pliers to grip the tabs securing the lifting system to the base and pull outwards. Withdraw the electric motor with worm gear from above.

SECTION 8
SERVICE
SCHEDULE

REV.00

8.1 Routine maintenance check list

S= Replacement

R= Service

P= Cleaning

D= Descaling

C= Inspection

***= Number of beverages dispensed**

Parts	Task			Reason	Item
	Service	5,000*	10,000*		
Casing, tanks, containers, power cable.	C	C	C	Dirty, damaged.	See documentation (exp. drawing).
Water coffee andè milk lines.					
GACO DIM 14 seals	S	S	S	Wear	
Water filter	S	S	S	Dirty, hygiene.	
Silicon tube	C	D	D	Dirty, scale, leaks.	See documentation (exp. drawing).
Turbine	C	D	D	Dirty, scale, leaks.	See documentation (exp. drawing).
Heater	C	D	D	Dirty, scale, leaks.	See documentation (exp. drawing).
Multi-valve	C	D	D	Dirty, scale, leaks.	See documentation (exp. drawing).
Heater pin o-ring	S	S	S	Dirty, scale, leaks.	
Brew group	P	P	P	Dirty, hygiene.	See documentation (exp. drawing).
Cappuccinatore	P	P	P	Dirty, hygiene.	See documentation (exp. drawing).
Coffee grinder					
Grinders	P	P	P	Dirty, hygiene.	See documentation (exp. drawing).
Check grinding and dose.	C	C	C	Grain size and dose	
Brew group					
Cleaning	C	R	R	Dirty, hygiene.	
Lubrication	C	R	R	Dirty, hygiene.	
O-ring	C	S	S	Wear	See documentation (exp. drawing).
Full service	C	C	C	Wear	
Othertasks					
Descale	C	D	D	Then check condition of parts.	
Temperature check	C	C	C	Client information	
Explanation of fault	C	C	C	Client information	
Safety check	C	C	C	Always	
Packing	C	C	S	Check, always.	Use new packaging if necessary.